

## Connecting EasyOne Pro to a Network

This Application Note will step you through the process of (1) connecting an EasyOne Pro or EasyOne Pro LAB (collectively referred to as “EOP”) to a Local Area Network (LAN), (2) setting a system IP Address, (3) Mapping a Network Drive, (4) accessing shared network-based folders for EMR connectivity, and (5) using a wireless adapter to network your device. Connecting your EasyOne Pro/LAB to a network allows you to: access network-based databases; backup and restore your database to and from a network location; share your database with other ndd applications; save data and reports to a central location, and; share common network folders with EMR applications.

### 1 Ethernet Connection

- Connect a network Ethernet cable to the lower network port on the rear panel of your EOP



### 2 Wireless Network Connectivity

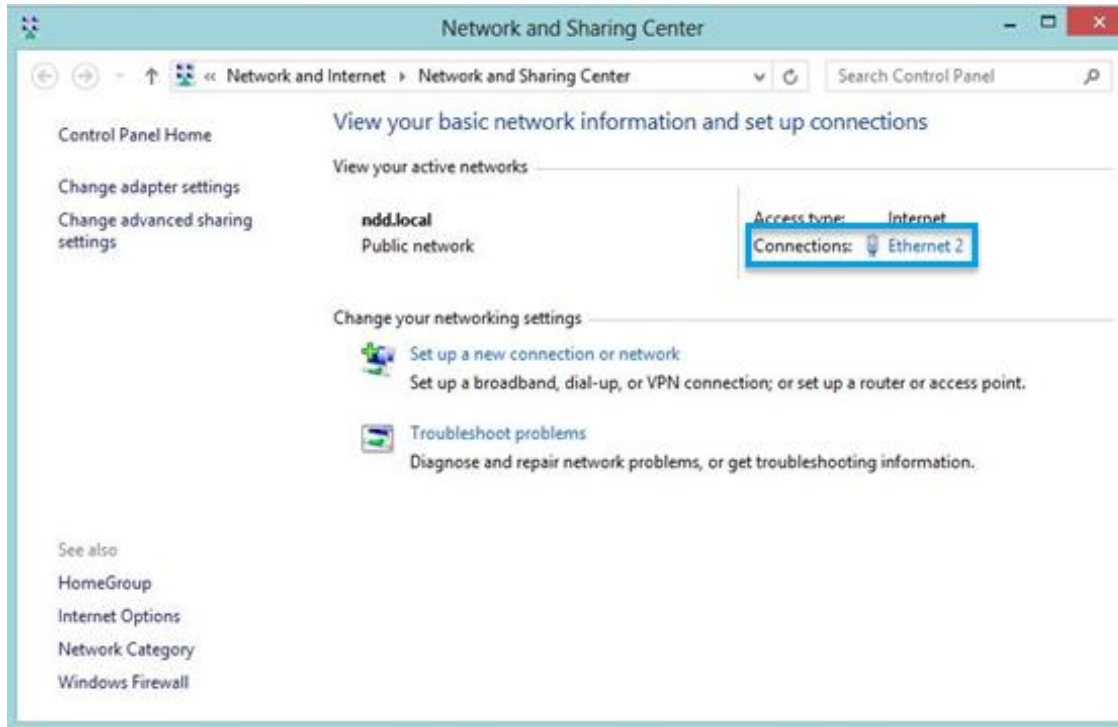
The EasyOne Pro does not have wireless capability built in. However, the use of an external Ethernet-based wireless adapter such as the NETGEAR N300 WiFi USB Adapter, or equivalent, will add the wireless capability to the Pro. For further information please view the [Connecting EasyOne Pro to Wireless application note](#).

### 3 Set the IP Address of your EasyOne Pro/LAB

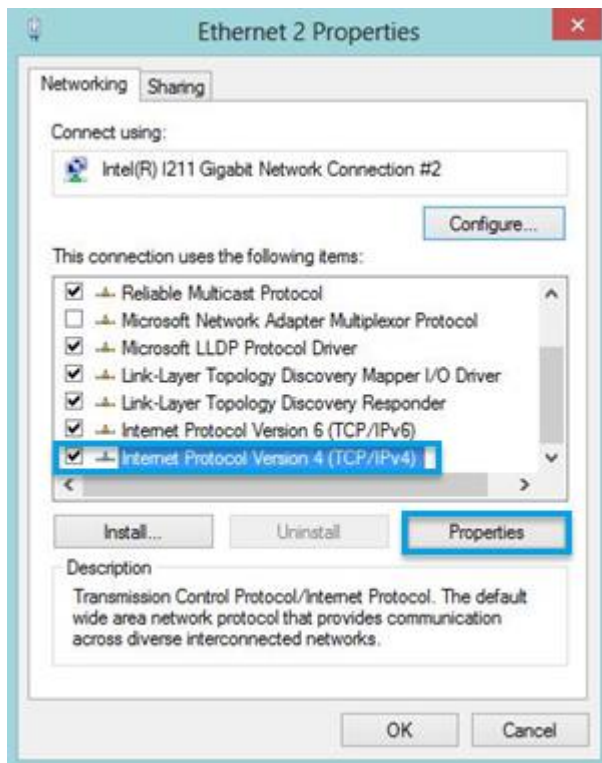
You CAN leave your EOP set to automatically receive an IP address from your network server (called ‘DHCP’ mode), but we recommend that you assign a specific **IP address** to your device. NOTE: You may need assistance from your network administrator for this step.

- Go to the **Main Menu**, and then select **Utilities / Configuration**
- Select the **Administrator** tab
- Enter the password “**EOPM or 8005**” and click the **Login** button
- Click the **Set IP** button

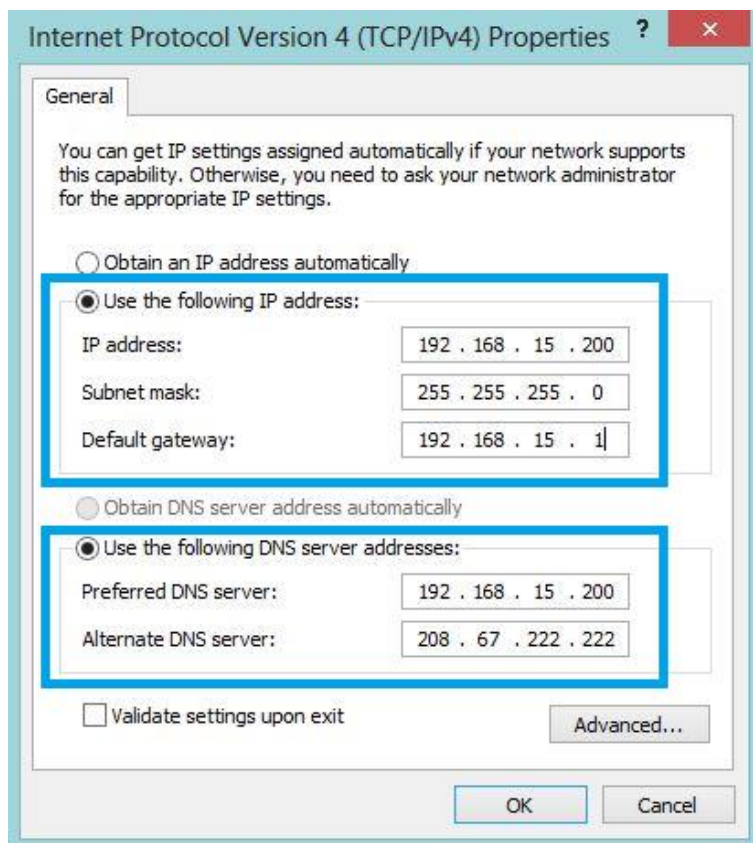
- Click on Connections: **Ethernet 2**



- Click on **Properties**
- Choose **Internet** 
- Highlight **Protocol Version 4 (TCP/Pv4)** and then click on **Properties**



- Check **Use the following IP address:**
- Enter the network's **IP address**
- Enter the network's **Subnet mask**
- Enter the network's **Default gateway**
- Check **Use the following DNS server addresses:**
- Enter a **Preferred DNS server**
- Enter an **Alternate DNS server**



- Click the **OK** button
- Click the **Close** button
- You will be asked to **Reboot** the device

## 4 Map a Network Drive

NOTE: You may need assistance from your network administrator for this step.

### 4.1 Preparation

Create a shared folder on a network server.

### 4.2 Map a Network Drive

- Go to the **Main Menu**, and then select **Utilities / Configuration**
- Select the **Administrator** tab
- Enter the password “**EOPTM or 8005**” and click the **Login** button
- Click the **Map Network Drive** button

In the “Map Network Drive” dialog box:

- Select the **Drive Letter**
- Enter the **UNC Path** of the networked folder, in the form: \\ServerName\Path  
Example: [\\srv-ndd\public\EMR](#)
- Make sure the **Reconnect at sign-in** checkbox is checked
- Make sure the **Connect using different credentials** checkbox is checked
- Click on **Finish**
- In the “Windows Security” dialog box, enter a valid **domain user** who has Read/Write privileges to your networked folder, along with the user’s **network password**.  
Example: username: nddus\networkuser
- Click **OK** to exit the “Windows Security” dialog box

## 5 Use SQL Server with EasyOne Pro/LAB

The EasyOne Pro/LAB supports SQL Server databases. An SQL Server database is recommended when you have multiple, simultaneous accesses on a master database. For further information please view the [EasyConnect Database Connection application note](#).

## 6 Connect a Printer

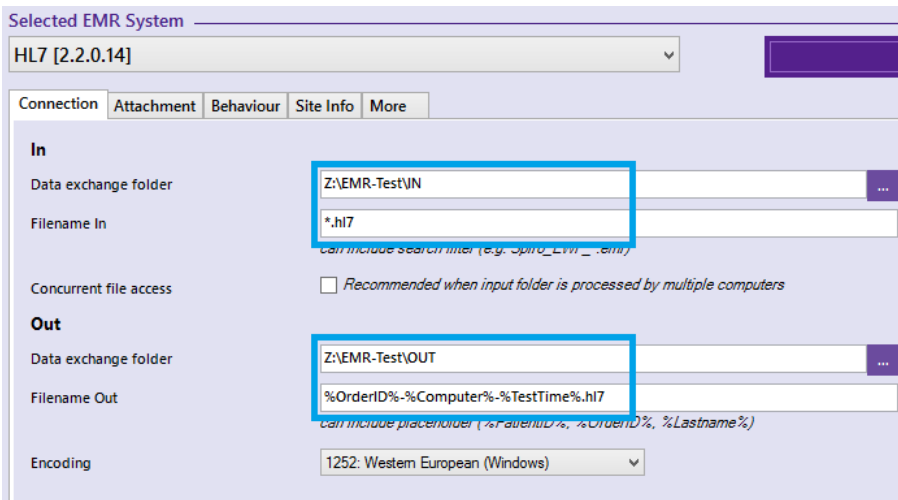
The EasyOne Pro/LAB supports PCL 5 network printing. For further information please view the [Using Printers with EasyOne Pro application note](#).

## 7 EMR Connectivity to Shared Network Folders

This section describes how to set EMR settings to point to shared network folders, for use in communicating with EMR systems using HL7.

- Go to the **Main Menu**, and then select **Utilities / Configuration**
- Select the **EMR** tab
- Under **Selected EMR System**, select the **HL7** option
- Under the **IN** section, next to **Data Exchange Folder**, click the **ellipses (...)**
- In the “Browse for Folder” dialog box, click **My Computer**
- Select the **Mapped Network Drive** you established in Step 3, above
- Select the desired sub-folder, and click **OK**.
- In the **Filename In** field, enter “\*.hl7”
- Under the **OUT** section, next to **Data Exchange Folder**, click the **ellipses (...)**
- In the “Browse for Folder” dialog box, click **My Computer**
- Select the **Mapped Network Drive** you established in Step 3, above
- Select the desired sub-folder, and click **OK**.
- In the **Filename Out** field, enter a valid filename, with placeholders.  
Example: %OrderID%-%Computer%-%TestTime%.hl7

The final screen should look something like this:



The screenshot shows the configuration window for the 'Selected EMR System' set to 'HL7 [2.2.0.14]'. The 'In' section has 'Data exchange folder' set to 'Z:\EMR-Test\IN' and 'Filename In' set to '\*.hl7'. The 'Out' section has 'Data exchange folder' set to 'Z:\EMR-Test\OUT' and 'Filename Out' set to '%OrderID%-%Computer%-%TestTime%.hl7'. The 'Encoding' is set to '1252: Western European (Windows)'. There are also tabs for 'Connection', 'Attachment', 'Behaviour', 'Site Info', and 'More'.

- Click **OK** to close the window.