



Medical Technologies



Spirometry 2019

Easy on-PC

PC spirometer

The **Easy on-PC** is a fully integrated spirometer that leverages our patented TrueFlow technology to deliver precise, accurate, and reliable results.

nddmed.com

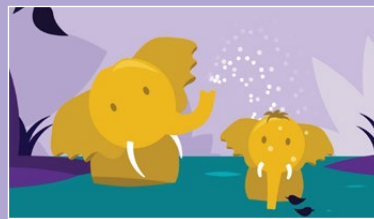


Simple. Certain. Proven.

Features

- Real-time animated incentives
- Proven EMR integration with top EMR/EHR systems
- Long term trending of patient results
- Automated quality feedback and interpretation
- Intuitive software interface
- Integrated provocation test with customizable protocols
- Wide range of selectable predicted values
- Calibration free technology

Incentive screens



Specifications

Test Types: FVC, FVL, SVC, MVV, Challenge and Pre/Post testing

Languages: English, Chinese, Croatian, Danish, Dutch, Finnish, French, German, Italian, Japanese, Norwegian, Portuguese, Russian, Spanish, Swedish, Turkish, Vietnamese

EMR connectivity: HL7, XML, GDT, API with EasyOne Connect

Standards: Meets 2005 & 2019 ATS/ERS standards and NIOSH/OSHA

Hard disk capacity: Installation/system 1 GB. Data up to 4 GB

RAM: 2 GB

EasyOne Connect software compatibility: Windows 7, Windows 8 and 8.1 (32 and 64 bit), Windows 10 (32 and 64 Bit), Windows 11

Part numbers

2700-3: Easy on-PC Spirometer

2050-1: Spirette box of 50

2050-5: Spirette box of 200

2050-10: Spirette box of 500

TrueFlow
makes the difference

The original ultrasonic flow measurement is highly accurate in all flow ranges, independent of gas composition, pressure, temperature and humidity.

ndd **TrueFlow** is a hygienic and resistance-free solution that does not require calibration during its lifetime.

EasyOne Connect

EasyOne Connect software offers one database and one platform for all **EasyOne** point-of-care-solutions. Data management has never been easier.

