



Medical Technologies

EasyOne Air

Portable & PC spirometer

Elevating spirometry.
Improving outcomes.

n d d's *EasyOne Air* consistently leads the way in spirometry innovation. With a user-friendly touchscreen and integrated diagnostic prompts, this portable device seamlessly integrates into any practice workflow.

The advanced TrueFlow technology eliminates the necessity for calibration, ensuring that *EasyOne Air* produces readily actionable data to quickly inform decisions. When it comes to choosing a reliable spirometry solution, the clear and simple choice is *EasyOne Air*.

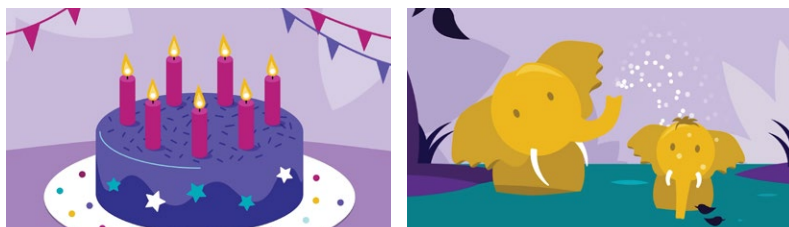


Simple. Certain. Proven.



Incentive screens

Available with *EasyOne Connect* software



Specifications

Test types: FVC, FVL, SVC, MVV and Pre/Post testing

Languages: Danish, Dutch, English, French, German, Italian, Norwegian, Polish, Portuguese, Russian, Spanish, Swedish

EMR connectivity: EasyOne Connect

Dimensions: 3.4" x 6.1" x 1.4", 13 oz
87 mm X 155 mm x 36 mm, 0.356 kg

Standards: ATS/ERS 2019 and 2005, NIOSH, OSHA, SSA Disability

Article numbers

2500-2A: EasyOne Air spirometry system (US and Canada)

2500-2INT: EasyOne Air spirometry system (international)

5050-50: EasyOne FlowTube box of 50

5050-200: EasyOne FlowTube box of 200

5050-500: EasyOne FlowTube box of 500
Not available in all countries



n d d Medical Technologies
300 Brickstone Square, Suite 604 Andover, MA, 01810 USA
Phone: +1-978-470-0923

n d d Medizintechnik AG
Technoparkstrasse 1, CH-8005 Zurich, Switzerland
Phone: +41 44 512 65 00



Features

- Large color touchscreen
- Easy navigation
- Long-term stable calibration
- Rechargeable battery: >100 tests with one charge
- Bluetooth connectivity
- Flexible use
- Portable or PC mode
- Real-time animated incentives
- Real-time data transfer
- Proven integration with top EMR/EHR systems

n d d TrueFlow

makes the difference

n d d's unique ultrasonic flow measurement is highly accurate in all flow ranges, independent of gas composition, pressure, temperature and humidity. n d d **TrueFlow** is a resistance-free solution that does not require calibration during its lifetime.

EasyOne Connect

EasyOne Connect software offers one database and one platform for all EasyOne point-of-care solutions. Data management has never been easier.

